

INDUSTRIAL/WAREHOUSE
FOR LEASE AVAILABLE NOW

Pacific Business Park

12505 NE Marx Street, Portland, OR 97230
Building 11



Key Features



8,865 sq. ft. shell

Can be combined with adjacent space for a total 14,013 sq. ft.



1,023 sq. ft. office



5 dock doors

Includes 2 edge of dock levelers

5 grade doors

Includes 1 oversized

End cap space

LED lighting in warehouse

15' clear height

Excellent access to
Interstates 84 and 205

2.7 miles to PDX International
Airport

Lease Rate (NNN):

\$0.90/sq. ft. shell

\$1.10/sq. ft. office

Jake Bigby

jakeb@pactrust.com

Caitlin Knecht

caitlink@pactrust.com

503.624.6300

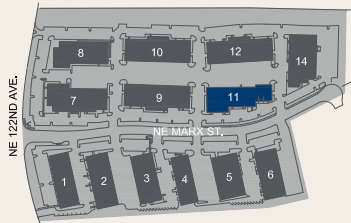
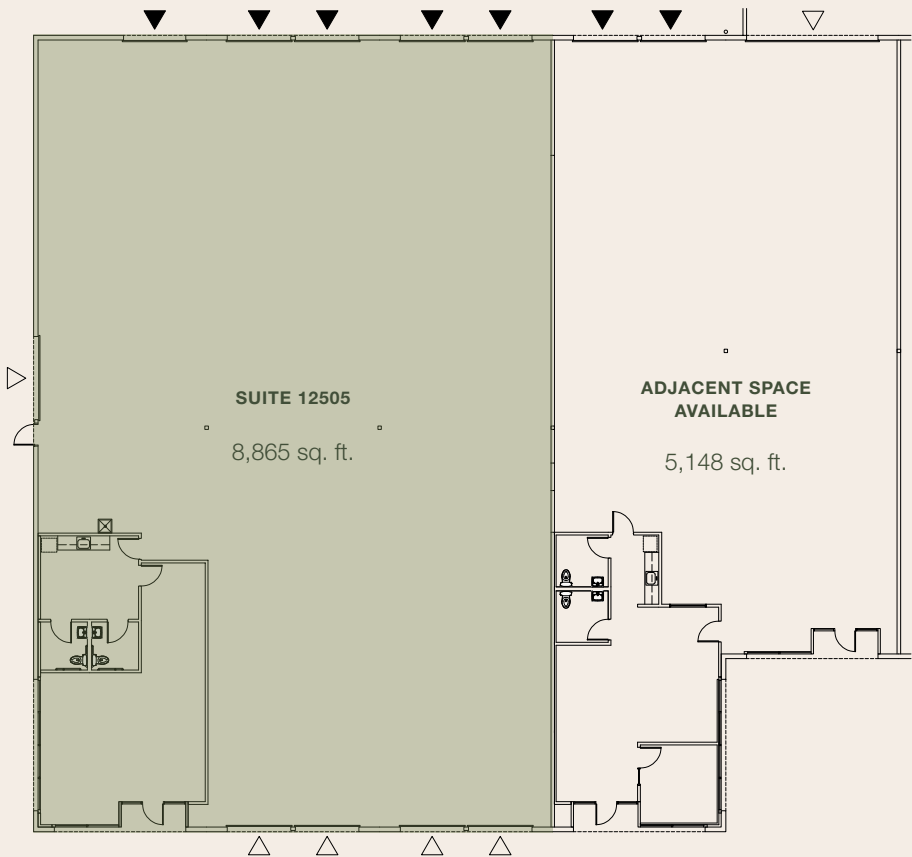
Owned & Managed by

PACTRUST

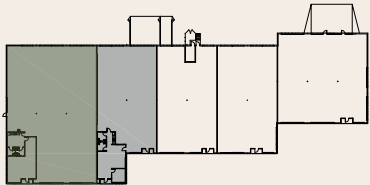
Space Plan

12505 NE Marx Street, Portland, OR 97230

8,865 Sq. Ft.



- ▽ GRADE ACCESS
- ▼ DOCK ACCESS
- 15' CLEAR HEIGHT



PROPOSED PLAN

Jake Bigby
jakeb@pactrust.com

Caitlin Knecht
caitlink@pactrust.com

503.624.6300
www.PacTrust.com